



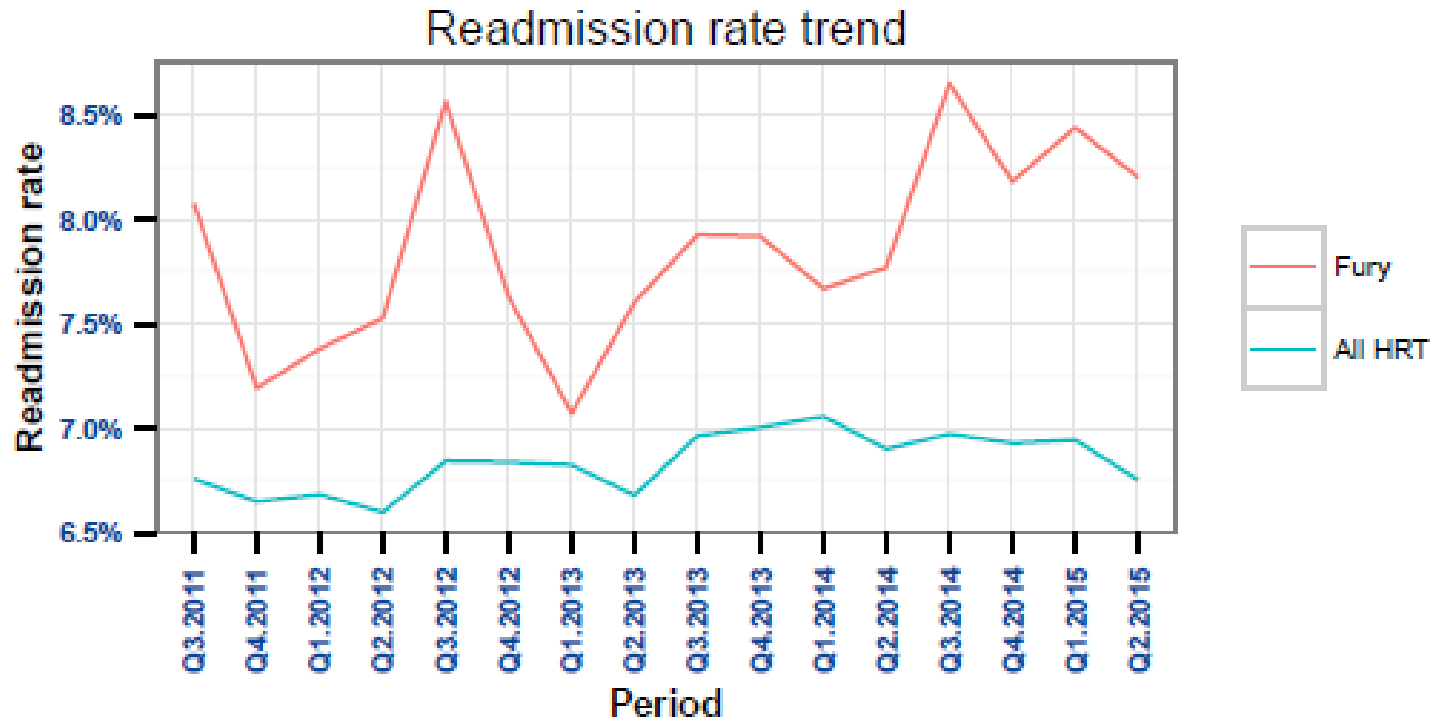
At-Risk Individuals

**Middlemore Hospital
Counties Manukau Health**

**HRT 1601 Readmissions Special Roundtable
1st / 2nd / 3rd March 2016 , Christchurch NZ**



Key Problem – increasing readmissions



Demographic factors

Figure 36 Pattern of distribution across NZDep13 deciles for Maaori, Pacific and European populations

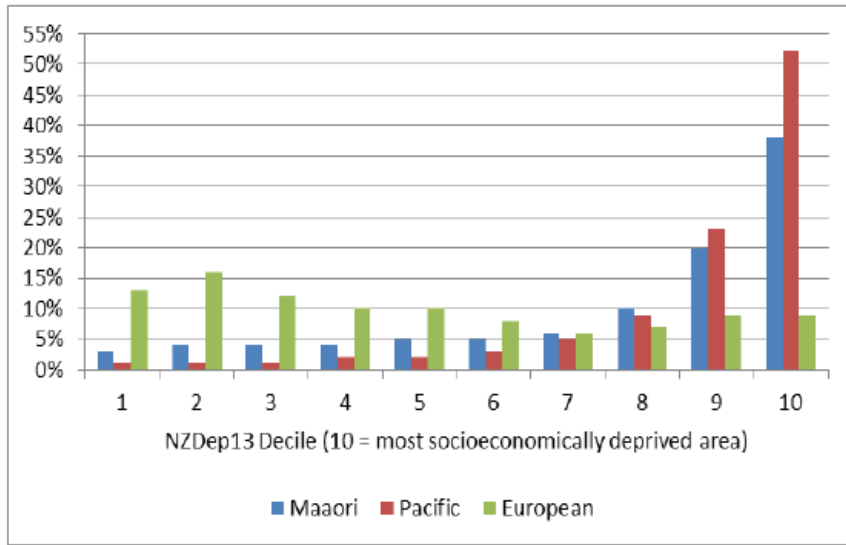
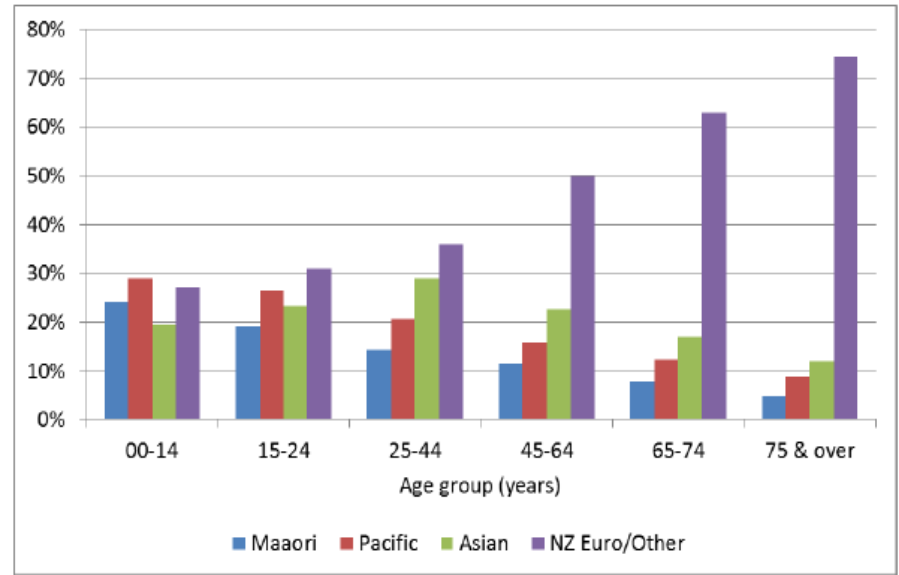
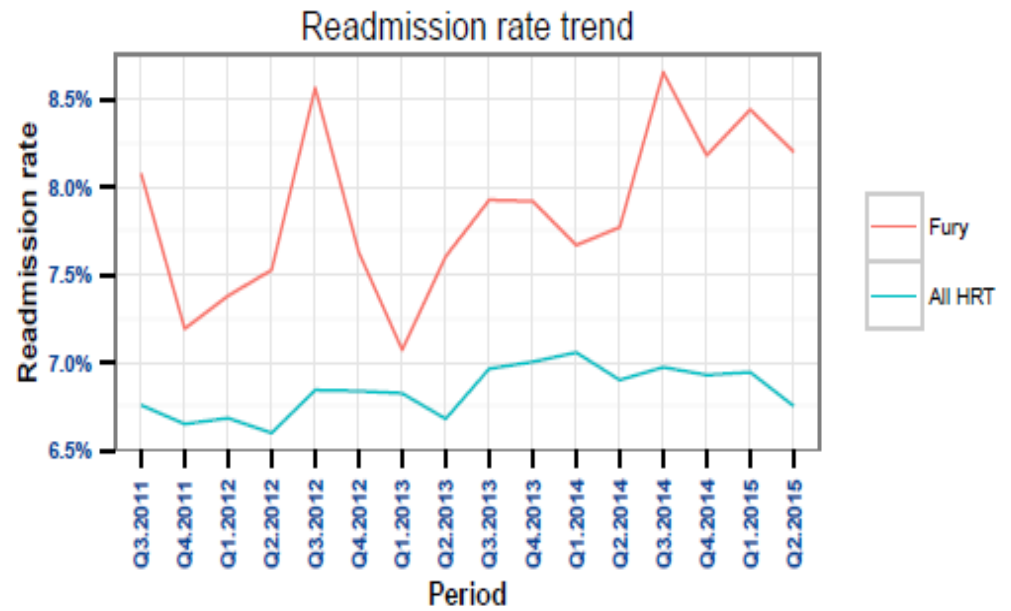
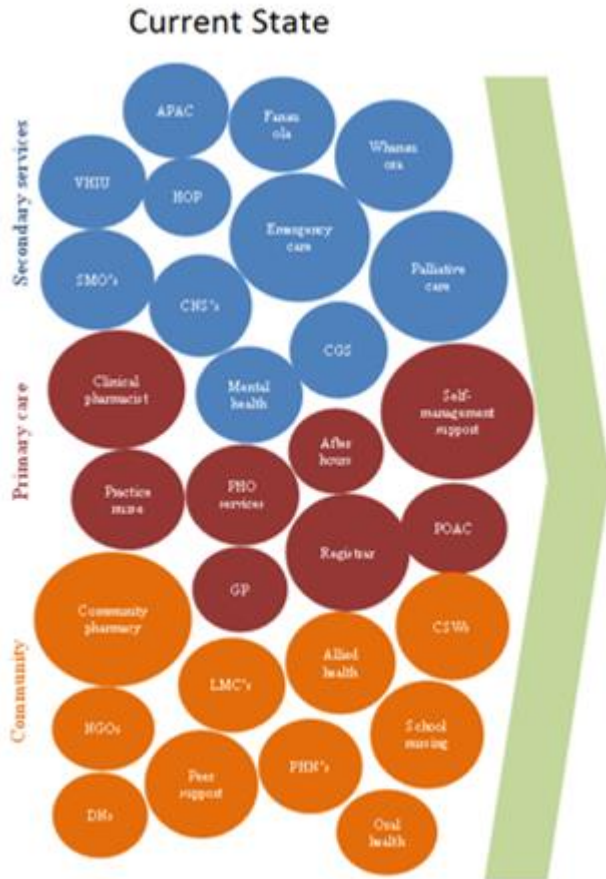


Figure 2 Ethnicity distribution within age groups of the estimated resident population of CM in 2014

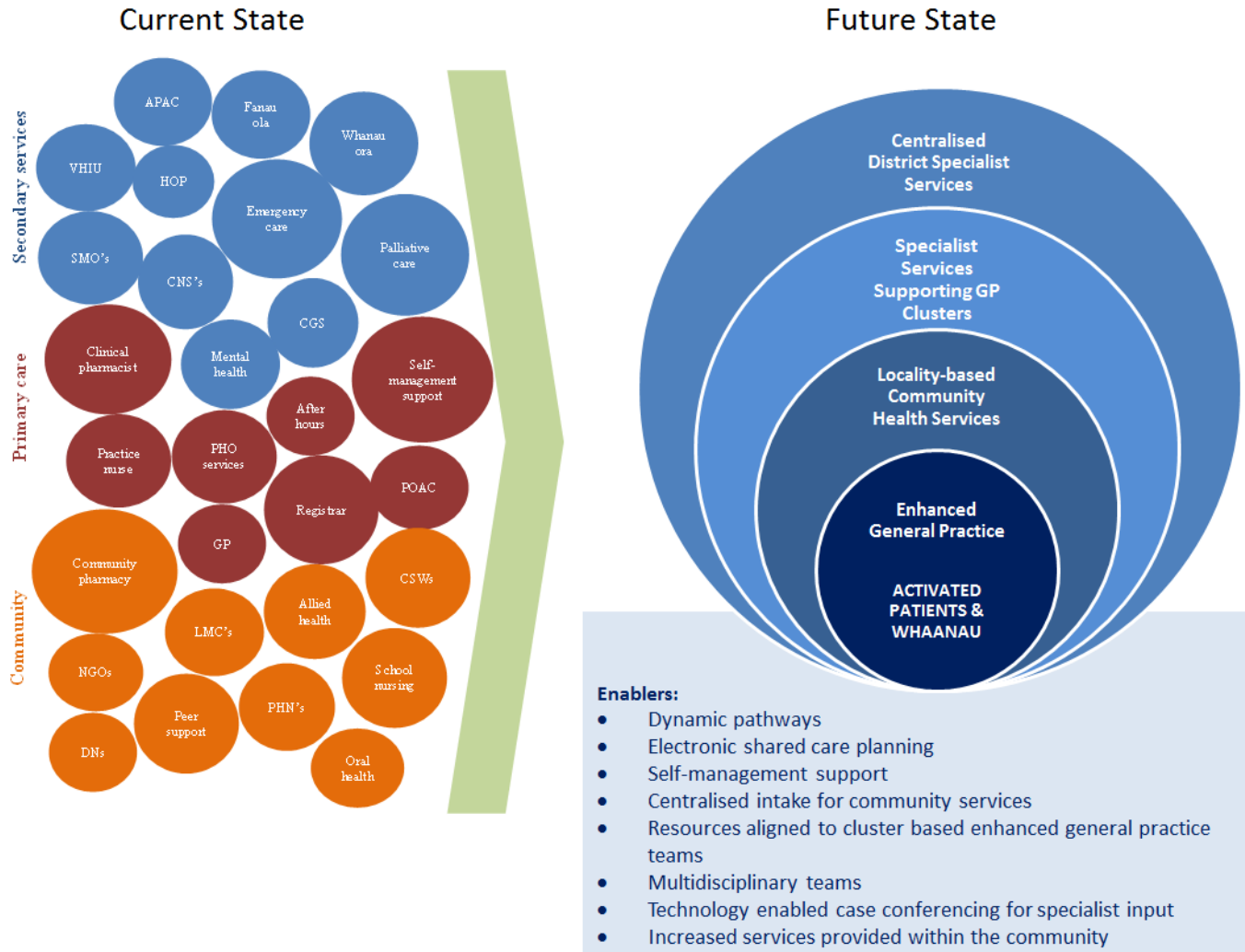


Silos of care



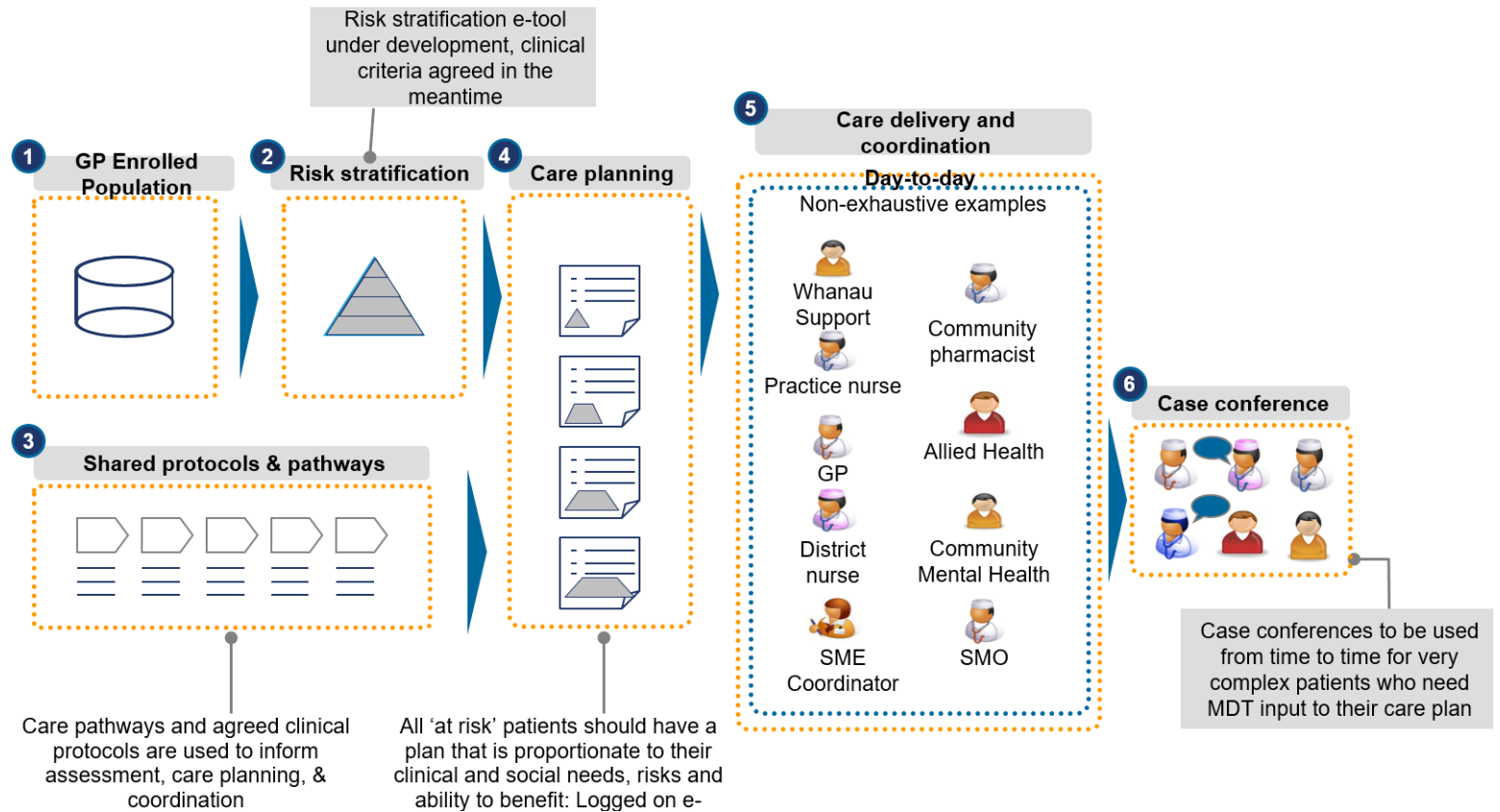
Integrated Care

Aim of this innovation



Aim of this innovation

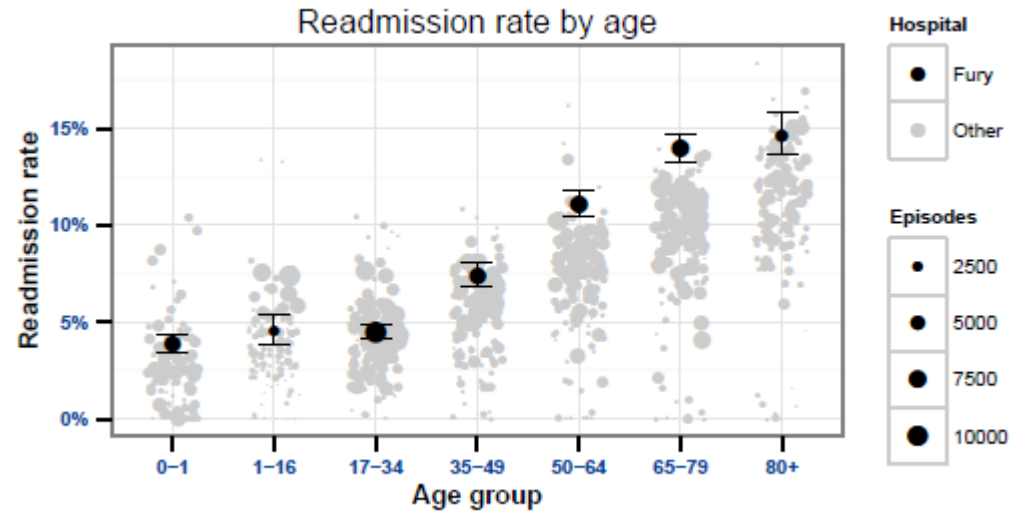
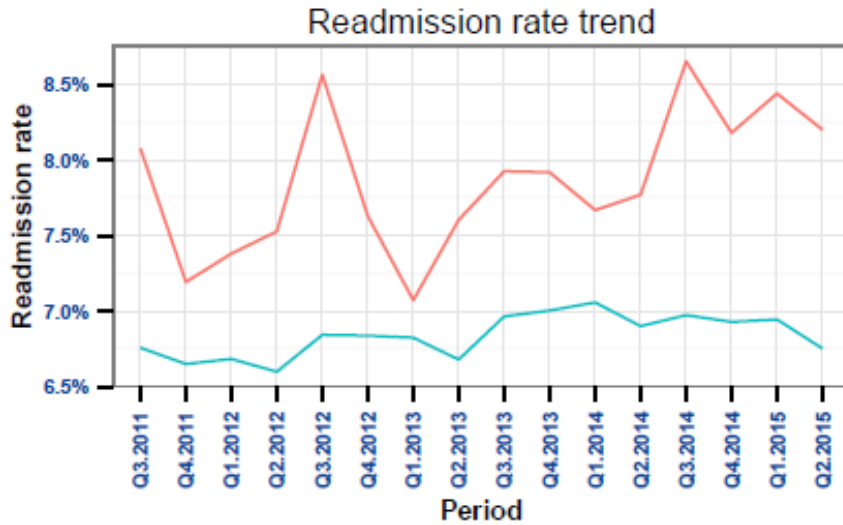
ARI - Proactive Planned Care



Aim of this innovation

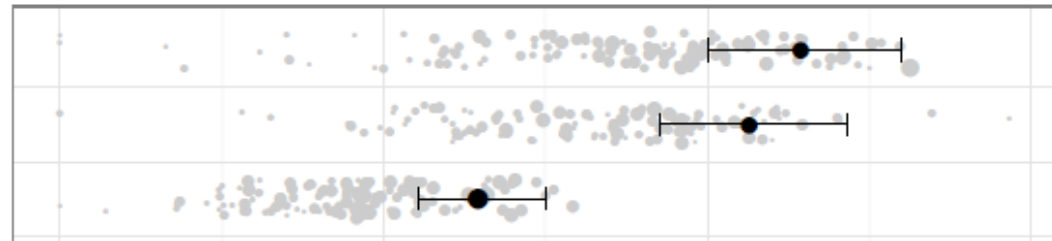
*Reducing unplanned readmissions
including a commitment
to improve on baseline*

Baseline Data

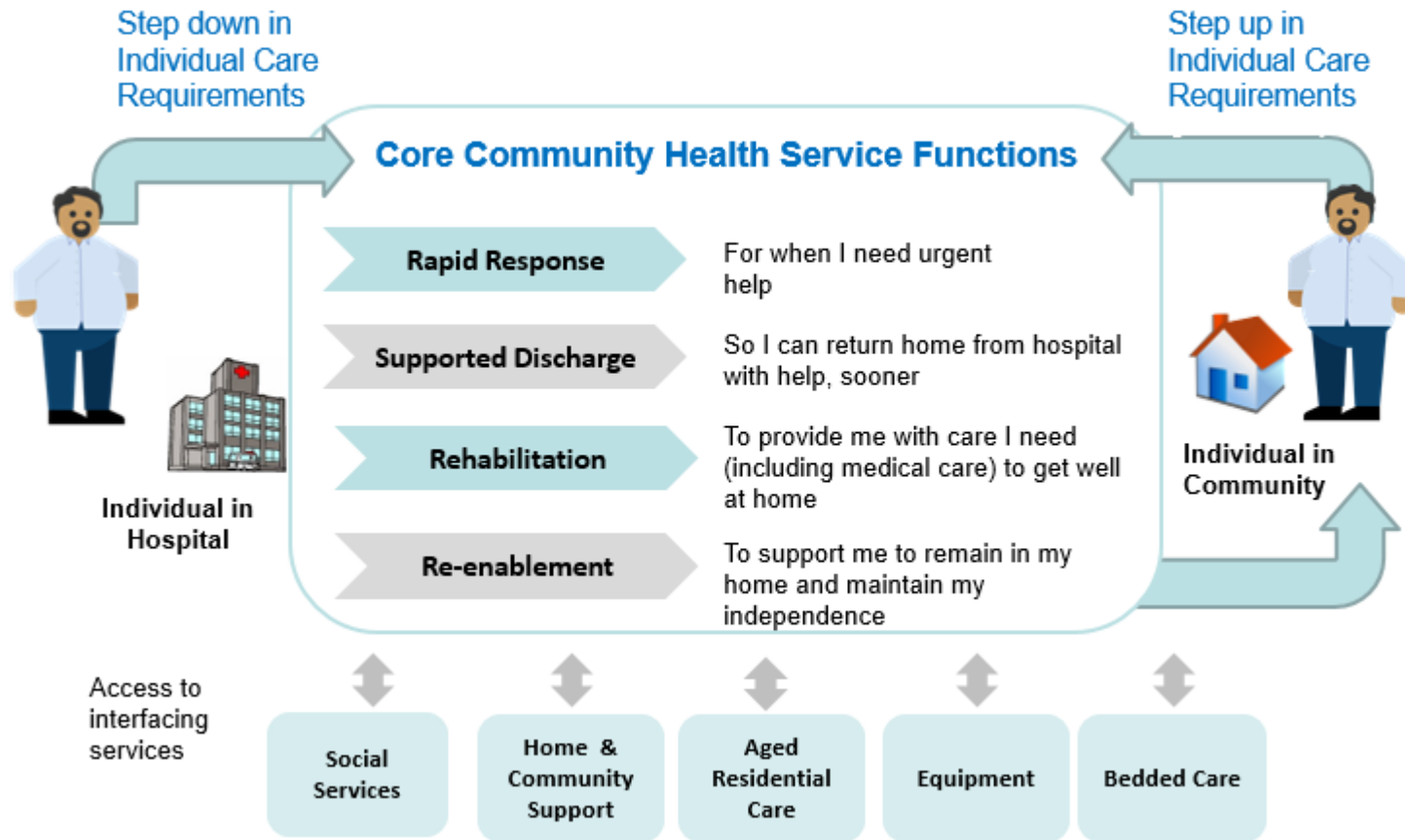


Fury top principal diagnoses by volume of readmissions

J44 – Other chronic obstructive pulmonary disease	765	175
I50 – Heart failure	761	162
J18 – Pneumonia, organism unspecified	1,107	143

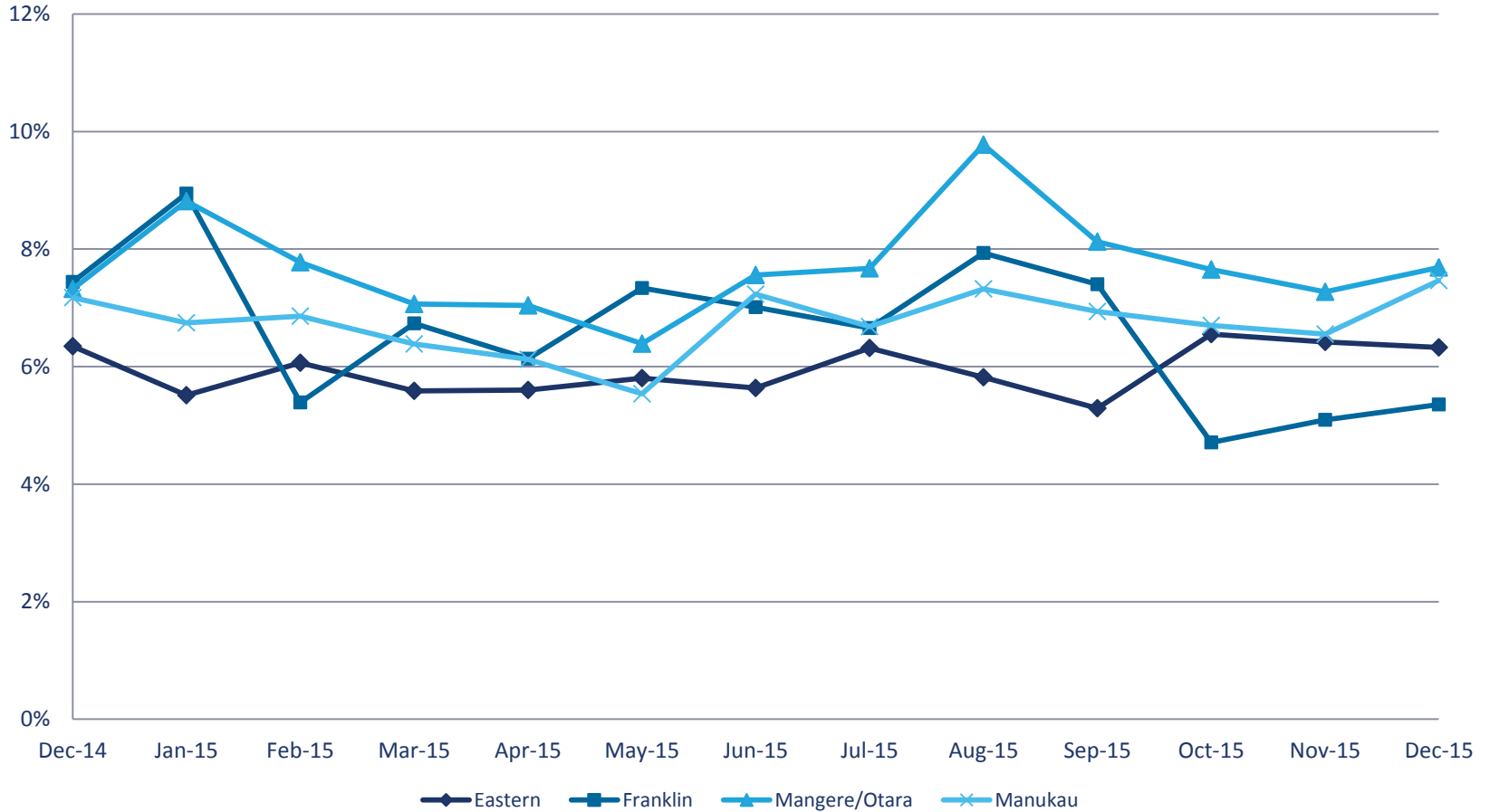


Key Changes Implemented

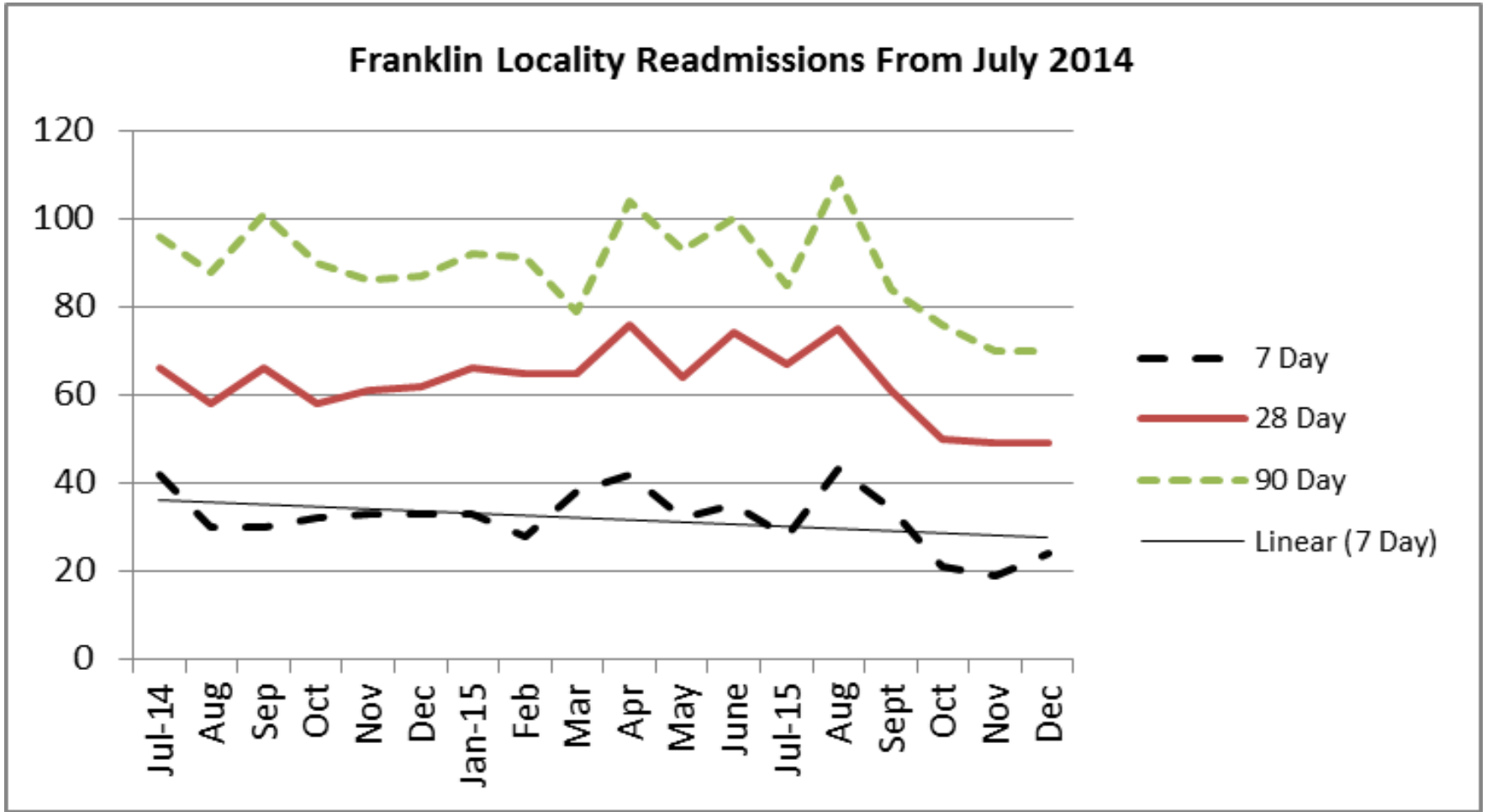


Outcomes so far

Unplanned Readmission Rate 28 Days



Outcomes so far



Lessons Learnt

- Focussing on integration of services
 - Focussing on those at highest risk
 - Continuous improvement
-
- For more information contact: mataroria.lyndon@middlemore.co.nz

