

Health Round Table

August 2015



Westmead Hospital
Orthogeriatric Service



Health
Western Sydney
Local Health District

Westmead Orthogeriatric Service

- Orthogeriatric registrar embedded on orthopaedic ward
- Geriatrician (*short / high maintenance*)
- Project officer
 - Data collection now funded for ACI/ANZHFR
- NUM (*Nurse of the year- many many years ago*)
- Orthopaedic CNC

- Weekly ward round / case conference
- BM with Anaesthetics / ED / Ortho / Geriatrics

- **New Orthopaedic HOD**
- **ACI Minimum Standards sponsorship – Divisional Heads & Executive Medical Director**
- **(ANZHFR participant)**



Anaesthetic Handover Orthogeriatric Patient Checklist **Western Sydney Local Health District**

Estimated blood loss volume _____

Haemocue result _____

Was the patient hypotensive during the operation? _____

Was the patient hypoxic during the operation? _____

Were there any other problems during anaesthetic?

If there are any issues please contact the treating team during working hours or the registrar after hours



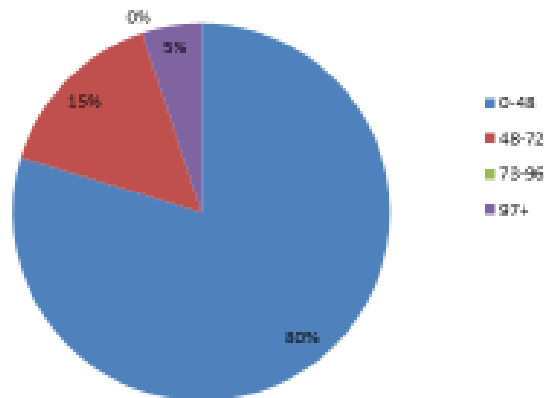
Wins

- Lower post-operative hypotension rates
- Pre-op assessments anaesthetic / geriatric collaboration
 - 48 hour surgery rates improving / Less TTE requests
- Fast transition to geriatric rehab
 - Decreased LOS on orthopaedic ward
 - ?increased LOS on rehab wards?
- Waiting for What board round
 - Stronger links with ortho registrars
- Femoral nerve block service (~60%)
- Weekend Surgical lists
- Osteoporosis referrals to Blacktown Hospital Clinic
- Good on floor teamwork (Physio/nursing/Geriatric AT)



Standard 3: Surgery within 48 hours

Wait Time for Surgery (hours)
April - June 2015
 (Exc inpatient fall)



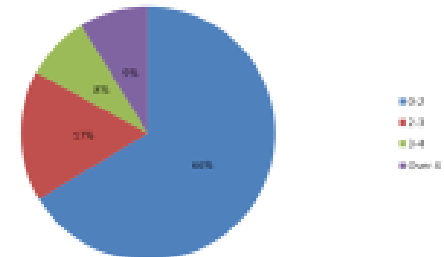
Delays over 97 hours = 3 patients

2 Medically Unfit (Cardiac and Renal)
 1 Issues with Anticoagulation

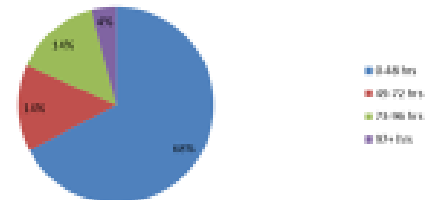


Health
 Western Sydney
 Local Health District

Wait time for surgery (days)
January - December 2014
 - Patients Admitted via ED



Wait Time for Surgery (hours)
Jan- March 2015
 (Exc patients transferred to private and inpatient fall)



Challenges

- **Systems vs individuals**
 - Orthopaedic RMOs
 - Social worker / OT / ortho regs “alignment of the moons”
- **Physiotherapy for day 1 mobilisation**
 - 15 minutes average per day for NOF
 - Longer Rehab stay ? Poor engagement of patients/families
- **Developing downstream rehab service**
 - Ethnic rehabilitation / fear of falling
 - High NHP rates
- **Effective relationship geriatrics – orthopaedics**
 - Formal M&M process
- **Co-ordinating service development with**
Anaesth/ED/nursing/allied health/Ortho/Geries colleagues



Plans 2015-6

- **Physiotherapists for day 1 mobilisation (the weak link)**
- **Physiotherapists 7 days a week**

- ANZHFR data collection
- Data surveillance and analysis
- Upskilling nurse case managers

- Care pathway / SIBR rounding
- Blacktown Hospital ANZHFR
- Future projects:
 - Agreements re delaying surgery with anaesthetics (AAGBI)
 - Pain assessments after prescribing
 - Falls prevention (Anne Marie Hill)
- Westmead Hospital redevelopment capital vs staffing



